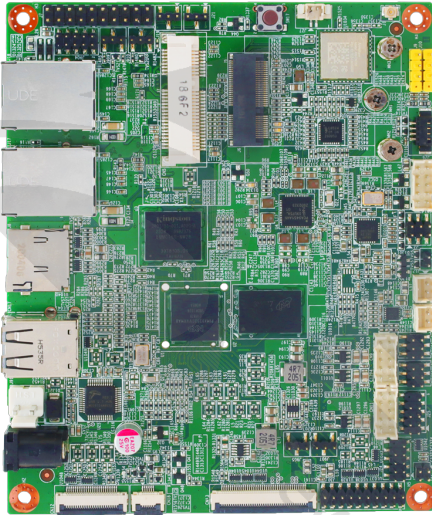


ERX93-AXP Industrial PC



- Dual Cortex®-A55 1.7 GHz processors
- Cortex® -M33 250 Mhz MCU processor
- Arm Ethos U-65 micro NPU
- Neon Media Processor Engine (MPE)
- EdgeLock secure enclave
- 2GB LPDDR4
- eMMC 16GB up to 64GB (Support eMMC 5.1)
- 1 x MIPI DSI, 1 x LVDS single channel
- MIPI CSI with 24pin FFC
- 2 x USB 2.0 (External)
- 2 x USB 2.0 (Internal) + 2 x USB 2.0 (opt.)
- 2 x RJ45 GbE LAN
- 1 x uSD slot, speed up to SDR104
- 2 x CAN-FD bus with built-in transceiver
- M.2 WIFI support (opt.)
- 12V DC input

Specifcation

CPU SUPPORT	NXP I.MX 93 : Dual Cortex®-A55 1.7 GHz processors Cortex® -M33 250 Mhz MCU processor Arm Ethos U-65 microNPU Neon Media Processor Engine (MPE)
Storage	eMMC 16GB up to 64GB (Support eMMC 5.1)
CHIPSET	Cortex®-A55 1.7 GHz
MEMORY	LPDDR4X 2GB
GRAPHICS	1 x LVDS single channel (up to 1366 x 768 p60 or 1280 x 800 p60) 1 x MIPI (up to 1920 x 1200 p60)
AUDIO	Stereo PDM digital microphone connector Stereo 3W speaker amplifier output (opt.) Analog Line-in/Line-out (opt.)
LAN	2 x RJ45 GbE LAN
REAR I/O	2 x RJ45 1 x uSD slot, speed up to SDR104 2 x USB 2.0 1 x DC JACK (DC 12V input)

INTERNAL I/O	GPIO: 1 x GPIO 20pin interface. CAN bus : 2 x CAN-FD bus with built-in transceiver Serial Ports : 2 x Full functional RS232 (including DSR/DTR/DCD/RI) (opt.) 1 x RS232/RS422/RS485 combo (opt.) 2 x USB 2.0 + 2 x USB 2.0 (opt.) Camera: 1 x MIPI CSI with 24pin FFC Wireless : 1 x M.2 WiFi (SDIO + UART) (opt.) 1 x WiFi module on board (SDIO + UART) (opt.) 1 x Mini PCIe for WAN LTE + uSIM slot (opt.) RTC : 1 x RTC IC with coin battery connector
DIMENSION	122 x 100 mm (W x L)
ENVIRONMENT	Operation: -25°C ~ 70°C Storage: -30°C ~ +80°C
OS SUPPORT	Support Linux

*The specification and pictures are subject to change without notice and the package contents may differ by area or your motherboard version!



Beyond Better, Racing to the Future. BIOSTAR®